

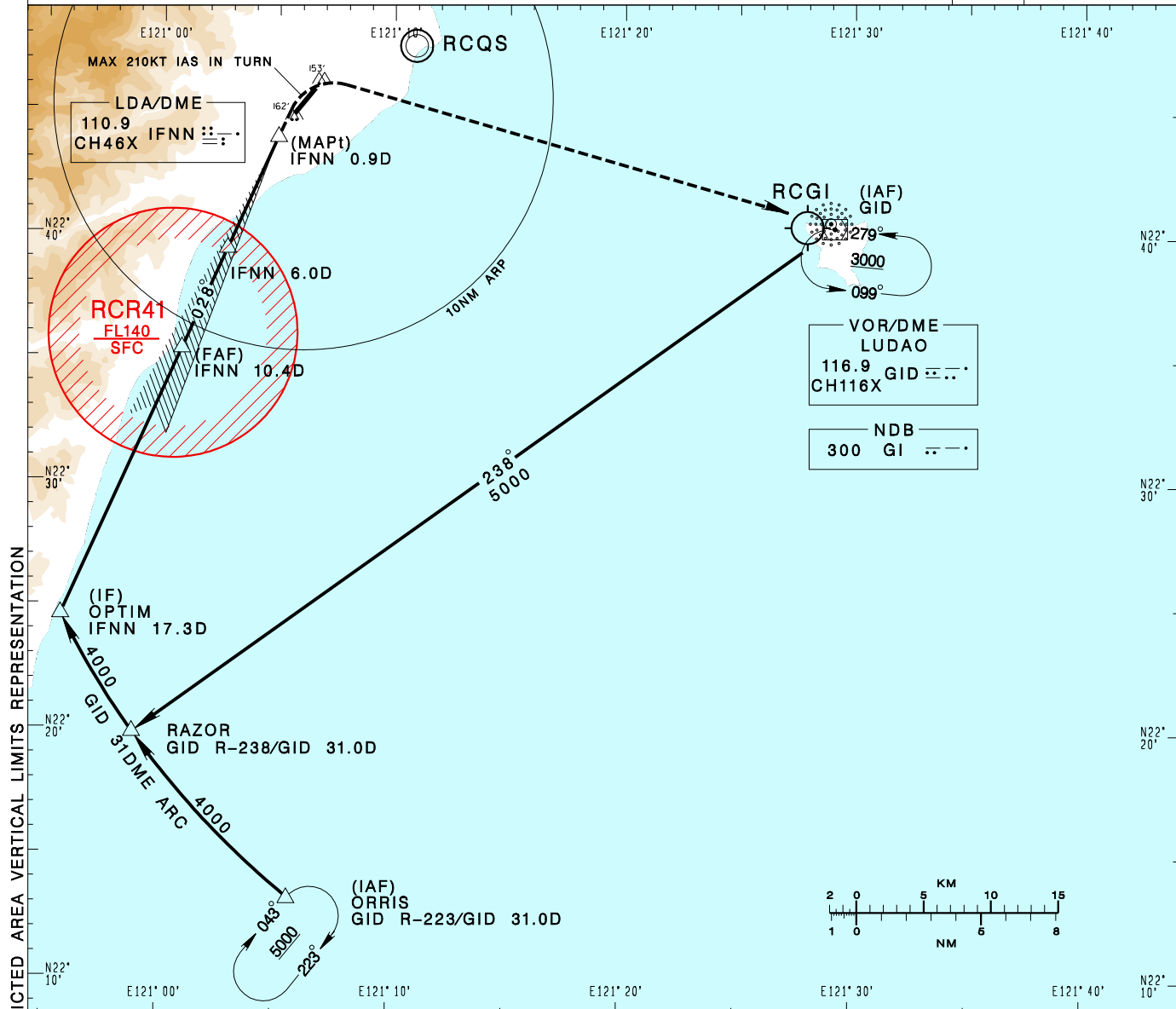
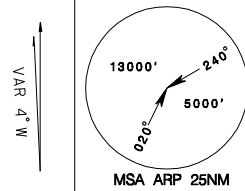
臺東/豐年機場
TAITUNG/FONGNIAN AD

RCFN
LDA RWY04

KAOHSIUNG APP 119.4 228.2	FONGNIAN TWR 118.1 236.6	ATIS 127.0
------------------------------	-----------------------------	---------------

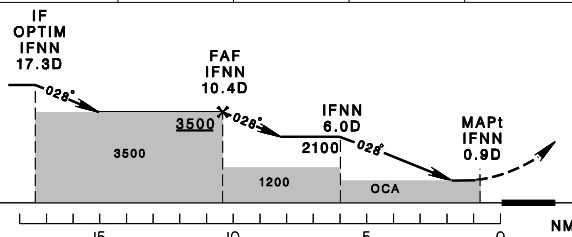
Apt Elev: 143' Rwy04 THR Elev: 143' Trans Level: FL130 Trans Alt: 11,000'

BEARINGS ARE MAGNETIC; DISTANCES ARE NAUTICAL MILES; ELEVATIONS, HEIGHTS IN FEET



CHANGES: NEW PAGE NUMBER, UPDATE RESTRICTED AREA, VERTICAL LIMITS REPRESENTATION

DIST to IFNN	10DME	9DME	8DME	7DME	6DME	5DME	4DME	3DME	2DME
ADVISORY ALT	3400	3080	2760	2440	2120	1800	1480	1170	850



MISSED APCH:
TURN RIGHT DIRECT TO GID/GI,
MAINTAIN 3000 AND HOLD.

*MAX 210KT IAS IN TURN.
NOTE
WHEN GID AND GI BOTH ARE NOT
AVAILABLE,
MISSED APCH:
TURN RIGHT HDG 110, MAINTAIN
3000, EXPECT RADAR VECTOR.

MINIMA (OCA IN FT, VIS IN M, OCH IN FT)				
CATEGORY	A	B	C	D
STRAIGHT IN	580/1200/437		580/1300/437	
STRAIGHT IN (ALS OUT)	580/1600/437		580/2000/437	

NOTE
1. CIRCLING NOT AUTHORIZED.
2. THE FINAL APCH COURSE IS OFFSET FROM LANDING RUNWAY BY 15 DEG.
3. CAUTION HIGH TERRAIN ALONG THE APCH COURSE.
4. THE APCH COURSE INFRINGES RCR41 AREA, PRIOR COORDINATION WITH ROCAF WILL BE COMPLETED BY ATC BEFORE ISSUING CLEARANCE DURING RCR41 ACTIVE HOURS.
* DME REQUIRED